

## PRODUCT SPECIFICATIONS

For current product specifications, please go to [www.griffin-stands.com](http://www.griffin-stands.com) and type the model number into the search bar. Locate the product listing to view the current factory specifications.

## TROUBLE SHOOTING

**Performance Issue, Uneven or Unstable-** Make sure all nuts and bolts are tight on the product. If they are, then loosen all nuts and bolts 1 full turn counter-clockwise, then go back and tighten each bolt only ½ turn tight. Then do a final tighten turn for another ½ turn tight. Next, Make sure there are not any missing nuts or bolts. Third, ensure all parts on the product are not broken or defective. Finally, Re-read the assembly instructions or watch the product demonstration video to ensure you have correctly assembled or are using the product properly with factory specifications.

**Missing Parts-** The pictures, videos and images shown in this manual might have changed style or count due to the product being redesigned. So in rare cases the part may no longer be included or of a different style. However, if you think you are missing a part that is necessary to the assembly and use of your product, then first carefully double check all packaging for any parts you think are missing. Some parts might be hiding in the packaging or loose in an inner box.

## COMPANY INFORMATION AND SUPPORT

### THANK YOU FOR YOUR PURCHASE

Thank you for purchasing the Griffin Snare Drum. Your product comes with a 1 year factory warranty from purchase date. Please read all assembly instructions prior to assembling your new cart. Pictures that may aid in assembly can be found by going to [www.griffin-stands.com](http://www.griffin-stands.com) and typing MS-14x5.5 / MS-13x3.5 / MS-10x6 / BR-Birch-14A / BC-Metal-14 into the search bar.

Griffin™ stands and accessories are manufactured in several innovative factories responsible for developing products that address the newest needs and trends of the current market. We take pride in the Griffin™ brand and endeavor to be on the forefront of the musical stands and musical and lighting accessories market.



Griffin | 11408 Hwy 64 W, Tyler, TX 75704 |  
[info@griffin-stands.com](mailto:info@griffin-stands.com) | [www.Griffin-Stands.com](http://www.Griffin-Stands.com)



## User Manual



# MS-14x5.5



# MS-13x3.5



# MS-10x6



# BR-Birch-14A



# BC-Metal-14

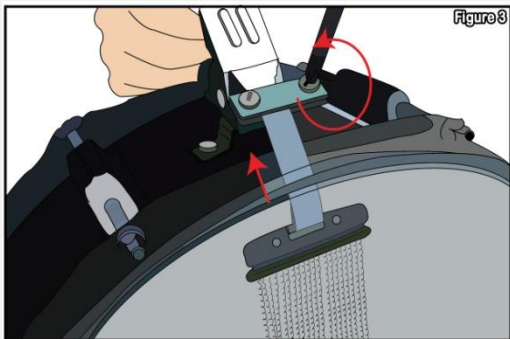
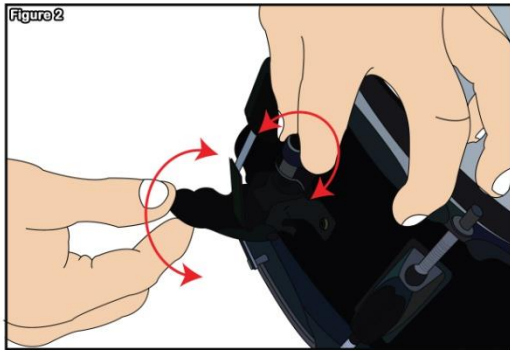
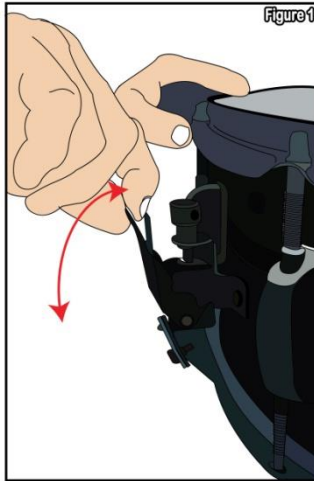
# Griffin Snare Drums

## ASSEMBLY INSTRUCTIONS

**Out of the box-** Please note that the drum will need to be adjusted and tuned straight out of the box. It is normal for the drum heads to be out of tune and the snare wires to be loose when stored inside the box. Please follow the instructions below to prep your drum for use.

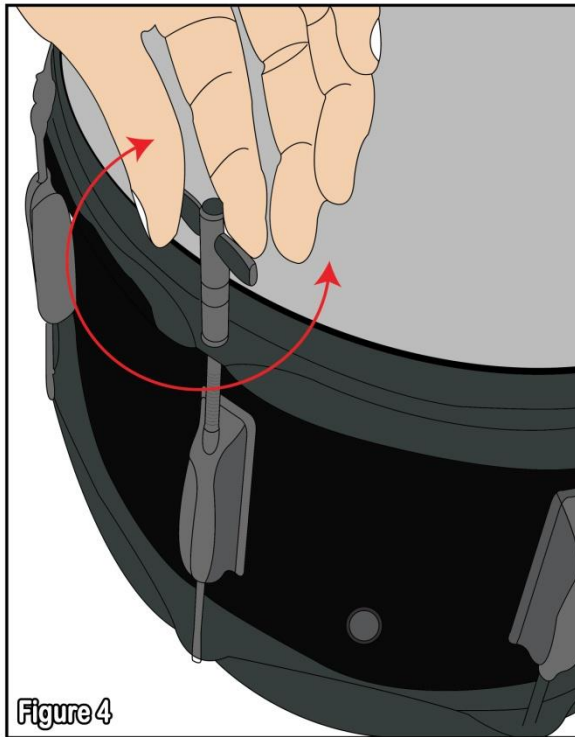
### Adjusting the Snare

**Strainer-** To adjust the snare wires and tighten it, unlock the throw off, use a screw driver and loosen all 4 screws surrounding the throw off (2 screws on each side) and adjust the snare wires closer to the snare head. Tighten the screws and lock back the throw off back in place. (See **Figures 1, 2 and 3**)

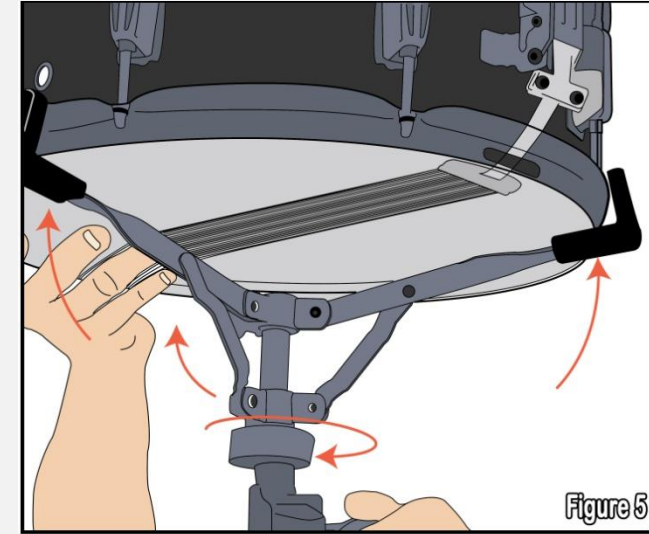


**Reduce Snare Buzz** – If you prefer to have the buzz reduced, place a small piece of transparent tape at the top of the snare head. This will reduce the buzzing sound. You can additionally use an aftermarket product like drum dots on top of the drum heads.

**Changing Drum Heads** – We prefer you change the drum heads to a premium aftermarket head for the best quality sound. The drum head that comes with your drum is only a starter drum head and is not meant to last for extended hard hitting use. If you prefer to change the drum heads a provided drum key is included in the package (**Figure 4**). All you have to do is loosen all the side screws and replace with your preferred drum head. Once the new drum head is installed hand tighten all the screws back and by using a star pattern tighten each screw using the drum key. This will make sure that the drum head is not leaning over to one side. Then make sure you tune the top of the drum head by tapping each area of the drum head next to the tuning lug and adjusting the tuning lug until all areas of the drum head are in tune.



**Mount on a Stand** – (**Figure 5**). Once you get that fine-tuned carefully position the snare back on its stand, be careful with the adjustment of the stand basket. The sound of your snare drum can actually be dramatically changed by how it sits on the stand. If you tension the basket too tight, it can have too much tension on the shell. Also, be sure the stand is not touching the bottom of the drum as this can interfere with the sound and cause damage.



## ASSEMBLY AND DEMONSTRATION VIDEO

Please scan the QR Code below for the product demonstration video. Or go to the URL shown here and find the product video. [www.Griffin-Stands.com/Videos](http://www.Griffin-Stands.com/Videos)



Scan me