

PRODUCT SPECIFICATIONS

For current product specifications, please to go www.FattoadPro.com and type the model number into the search bar. Locate the product listing to view the current factory specifications.

TROUBLE SHOOTING

Performance Issue, Uneven or Unstable- Make sure all nuts and bolts are tight on the product. If they are, then loosen all nuts and bolts 1 full turn counter-clockwise, then go back and tighten each bolt only ½ turn tight. Then do a final tighten turn for another ½ turn tight. Next, Make sure there are not any missing nuts or bolts. Third, ensure all parts on the product are not broken or defective. Finally, Re-read the assembly instructions or watch the product demonstration video to ensure you have correctly assembled or are using the product properly with factory specifications.

Missing Parts- The pictures, videos and images shown in this manual might have changed style or count due to the product being redesigned. So in rare cases the part may no longer be included or of a different style. However, if you think you are missing a part that is necessary to the assembly and use of your product, then first carefully double check all packaging for any parts you think are missing. Some parts might be hiding in the packaging or loose in an inner box.

COMPANY INFORMATION AND SUPPORT

THANK YOU FOR YOUR PURCHASE

Thank you for purchasing the Fat Toad Double Laptop Stand. Your product comes with a 1-year factory warranty from purchase date. Please read all assembly instructions prior to assembling your new stand. Pictures that may aid in assembly can be found by going to www.Fattoadpro.com and typing LS21D into the search bar.

Fat Toad™ stands and accessories are manufactured in several innovative factories responsible for developing products that address the newest needs and trends of the current market. We take pride in the Fat Toad™ brand and endeavor to be on the forefront of the musical stands and musical and lighting accessories market.



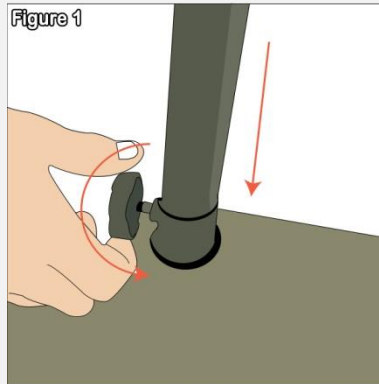
User Manual Model# LS21D



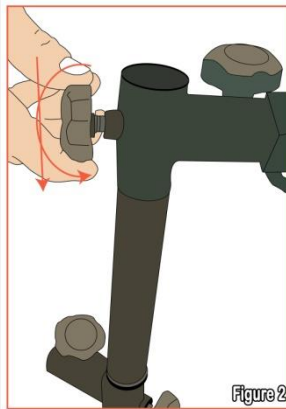
Double Laptop Stand

ASSEMBLY INSTRUCTIONS

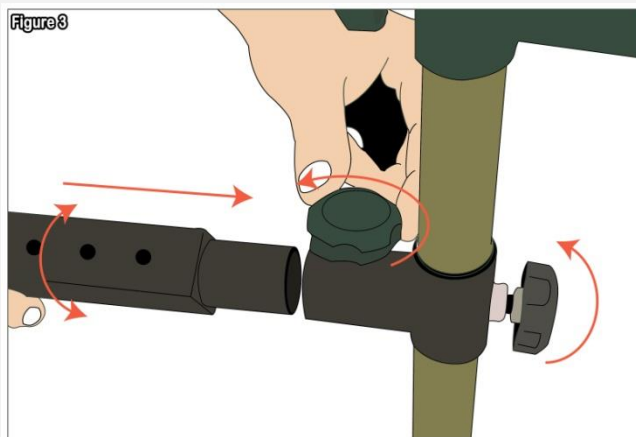
Step 1 – Lay the black plate down and loosen the knob. Make sure to loosen all the way and insert the long chrome pipe fully at the base and tighten the knob to secure (See **Figure 1**).



Step 2 – Take the T-connectors and insert in the chrome pipe and tighten the knob to secure in place as shown in **Figure 2**. These T-connectors should be facing the opposite directions.

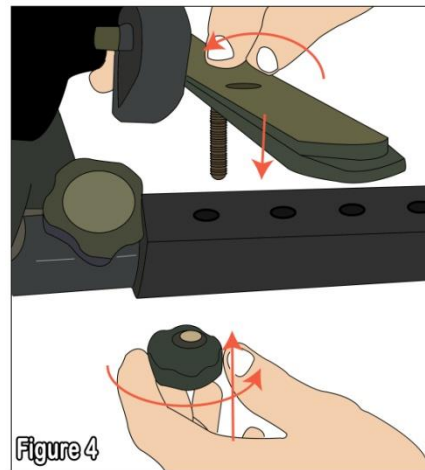


Step 3 – Get the horizontal pipe and insert the circular part to the T-connector and tighten the knob, refer to **Figure 3**.



Step 4 – Shown in **Figure 4** is how to place the support arms. Take the support arms and slide the bolt in your preferred hole and insert the screw to one of the holes of the horizontal pipe. Place the knob at the bottom and turn to tighten the arms in place. The knobs should be pointing down. The width between the plates depends on what size equipment you are using. You can adjust the position of each side by loosening the appropriate swing arm knob and moving the swing arm. Just be sure to tighten the set screw knob before letting go. Also note that placing these plates either too far forward or back could cause an imbalance causing the stand to fall over

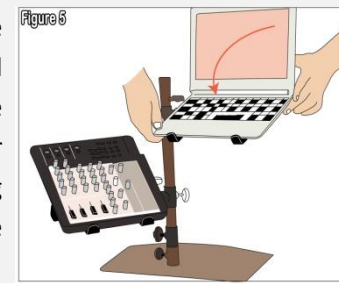
Step 5 – Round rubber felts are placed at the bottom of the black plate and longer ones are to be placed on the support arms to keep a comfort position for your equipment.



Step 6 – For safety reasons, please always make sure to test the stability and safety of the product before use. Double check all nuts and bolts, knobs and connectors, make sure that these are tight and securely fastened before use of your product. Test the product under light use or light loads the first time to confirm assembly and structure of the product is correct.

Tilt angle of the horizontal pipe can be adjusted to your preference as well as the width capacity of the support arms, depending on how you place the arms close or far to each other.

Please note that hardware bolts to assemble the stand maybe screwed into the parts themselves. So, for example, if you are missing a bolt that goes into the bottom base support tube,



then look at the end of the bottom base support tube and you will see that hardware bolt is already screwed into the stand. All you need to do is unscrew that bolt and then screw it back in to assemble the two parts that connect on that end. If the stand is wobbly loosen up each bolt on the stand slightly. Then tighten up 1 bolt all the way as much as it will tighten. After that start on the next bolt that is completely opposite of the 1st bolt that you tightened. For example, if you first tightened up the bolt in the top right of the stand, then next start to tighten up the bolt on the bottom left. Keep going in order of the opposite bolt that you tightened up last. Once you are done, repeat the process of going through and tightening up the bolts one more time.

ASSEMBLY AND DEMONSTRATION VIDEO

Please scan the QR Code below for the product demonstration video. Or go to the URL shown here and find the product video. www.FattoadPro.com/Videos



Scan me