

PRODUCT SPECIFICATIONS

For current product specifications, please go to www.griffin-stands.com and type the model number into the search bar. Locate the product listing to view the current factory specifications.

TROUBLE SHOOTING

Performance Issue, Uneven or Unstable- Make sure all nuts and bolts are tight on the product. If they are, then loosen all nuts and bolts 1 full turn counter-clockwise, then go back and tighten each bolt only ½ turn tight. Then do a final tighten turn for another ½ turn tight. Next, Make sure there are not any missing nuts or bolts. Third, ensure all parts on the product are not broken or defective. Finally, Re-read the assembly instructions or watch the product demonstration video to ensure you have correctly assembled or are using the product properly with factory specifications.

Missing Parts- The pictures, videos and images shown in this manual might have changed style or count due to the product being redesigned. So in rare cases the part may no longer be included or of a different style. However, if you think you are missing a part that is necessary to the assembly and use of your product, then first carefully double check all packaging for any parts you think are missing. Some parts might be hiding in the packaging or loose in an inner box.

COMPANY INFORMATION AND SUPPORT

THANK YOU FOR YOUR PURCHASE

Thank you for purchasing the Griffin Triple Keyboard Stand. Your product comes with a 1 year factory warranty from purchase date. Please read all assembly instructions prior to assembling your new cart. Pictures that may aid in assembly can be found by going to www.griffin-stands.com and typing LK551 into the search bar.

Griffin™ stands and accessories are manufactured in several innovative factories responsible for developing products that address the newest needs and trends of the current market. We take pride in the Griffin™ brand and endeavor to be on the forefront of the musical stands and musical and lighting accessories market.



User Manual Model# LK551



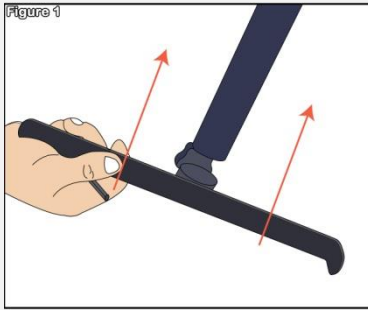
Griffin | 11408 Hwy 64 W, Tyler, TX 75704 |
info@griffin-stands.com | www.Griffin-Stands.com



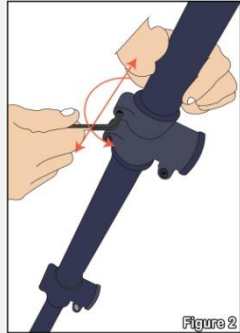
Triple Keyboard Stand

ASSEMBLY INSTRUCTIONS

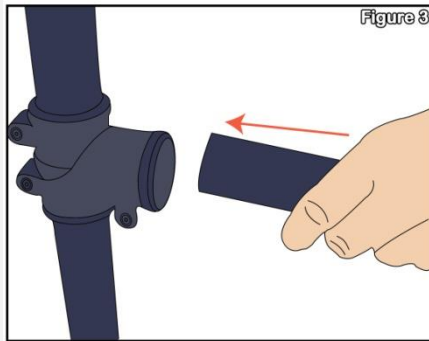
Step 1 – Take the keyboard holder bar (Part a) for the 3 tier sections and insert the bracket mounts for the keyboard as shown in **Figure 1**. Make sure to insert 2 bracket mounts for each middle pipe.



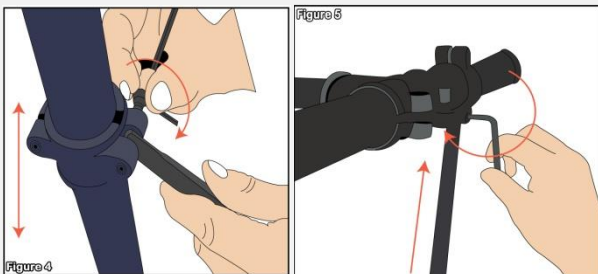
Step 2 – **Figure 2** shows how to tighten the T-connectors on the braces (Part b). Make sure that the T-connector on the other side is the same height as the other side of the vertical pipe



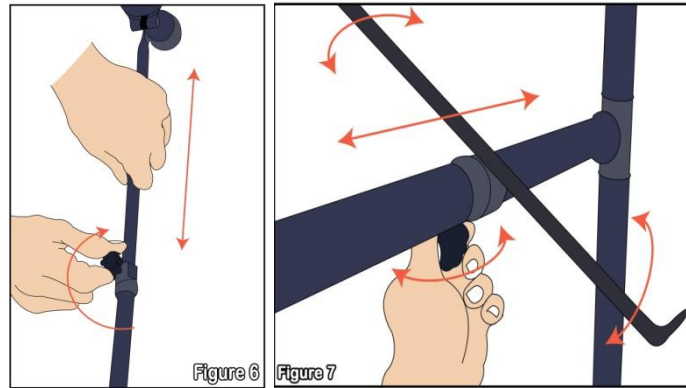
Step 3 – Once the T-Connectors are tightened take the keyboard holder bar (Part a) and slide to each T-connectors on the braces (Part b). Tighten the bolts as seen in **Figure 3**.



Step 4 – **Figure 4** and **5** shows the rear telescoping bar (Part d) being connected to the back of the stand. These goes from upper right corner to the lower left corner and vice versa for the other piece. Tighten the bolts to secure the brackets. These cross brackets are telescopic, it can be extended or shortened according to your preference depending on the angle of the V-stands.

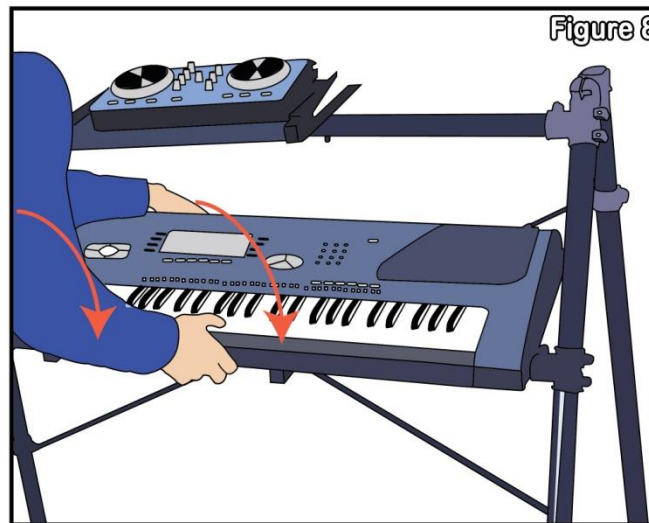


Step 5 – Take the bottom telescopic bracket (Part c) and screw at the base of the braces (Part b). Connect each end to the coupler and screw in securely as shown in **Figure 6**.

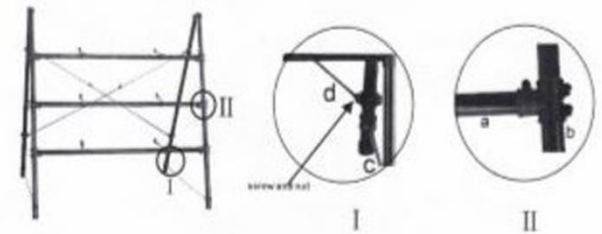
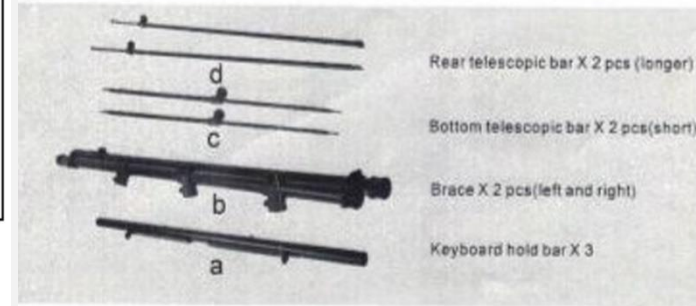


Step 6 – **Figure 7** above shows how to adjust the bracket mounts. It can be adjusted side to side and angled. Once you find your preferred distance and/or angle screw the knob below the bracket mount to keep your setting. The padding on the bracket mounts may or may not be present, if not find the padding in the package and stick it on the bracket mounts. This will protect your equipment and the bracket mount from being scratched.

Step 7 – For safety reasons, please always make sure to test the stability and safety of the product before use. Double check all nuts and bolts, knobs and connectors, make sure that these are tight and securely fastened before use of your product. Test the product under light use or light loads the first time to confirm assembly and structure of the product is correct.



Height: 140cm
Width: 150cm



ASSEMBLY AND DEMONSTRATION VIDEO

Please scan the QR Code below for the product demonstration video. Or go to the URL shown here and find the product video. www.Griffin-Stands.com/Videos



Scan me