

PRODUCT SPECIFICATIONS

For current product specifications, please to go www.griffin-stands.com and type the model number into the search bar. Locate the product listing to view the current factory specifications.

TROUBLE SHOOTING

Performance Issue, Uneven or Unstable- Make sure all nuts and bolts are tight on the product. If they are, then loosen all nuts and bolts 1 full turn counter-clockwise, then go back and tighten each bolt only ½ turn tight. Then do a final tighten turn for another ½ turn tight. Next, Make sure there are not any missing nuts or bolts. Third, ensure all parts on the product are not broken or defective. Finally, Re-read the assembly instructions or watch the product demonstration video to ensure you have correctly assembled or are using the product properly with factory specifications.

Missing Parts- The pictures, videos and images shown in this manual might have changed style or count due to the product being redesigned. So in rare cases the part may no longer be included or of a different style. However, if you think you are missing a part that is necessary to the assembly and use of your product, then first carefully double check all packaging for any parts you think are missing. Some parts might be hiding in the packaging or loose in an inner box.

COMPANY INFORMATION AND SUPPORT

THANK YOU FOR YOUR PURCHASE

Thank you for purchasing the Griffin Crank Up Truss Stand. Your product comes with a 1 year factory warranty from purchase date. Please read all assembly instructions prior to assembling your new cart. Pictures that may aid in assembly can be found by going to www.griffin-stands.com and typing LK353 into the search bar.

Griffin™ stands and accessories are manufactured in several innovative factories responsible for developing products that address the newest needs and trends of the current market. We take pride in the Griffin™ brand and endeavor to be on the forefront of the musical stands and musical and lighting accessories market.



User Manual Model# LK353



Crank Up Truss Stand

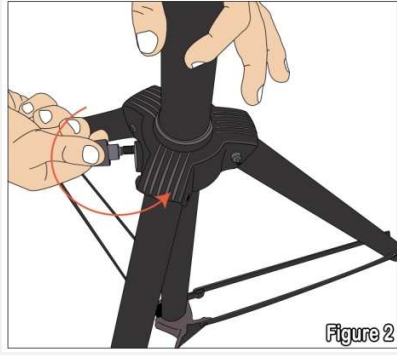
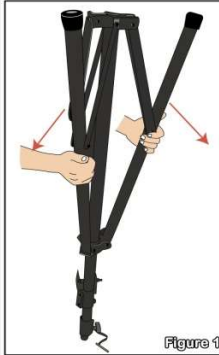


Griffin | 11408 Hwy 64 W, Tyler, TX 75704 |
info@griffin-stands.com | www.Griffin-Stands.com



ASSEMBLY INSTRUCTIONS

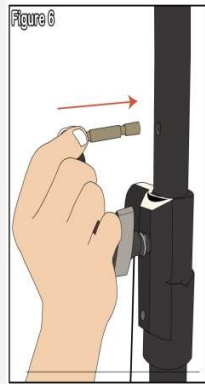
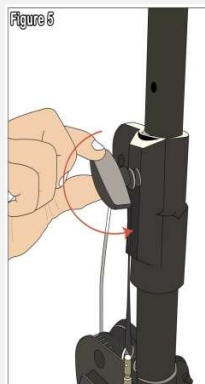
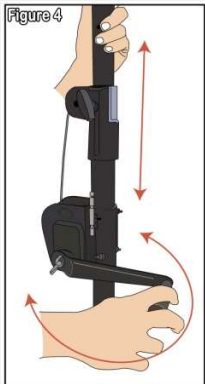
Step 1 – Take the stand and turn it upside down to have more leverage in spreading the legs. Spread the legs approximately 36" (91.5cm) apart. (See **Figure 1**) Turn the knob tight near the base to secure the legs. (See **Figure 2**)



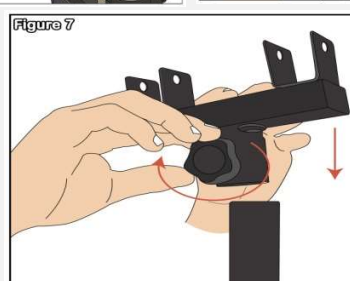
Step 2 – Take the handle and insert it through the bolt beside the cranks and secure with a wing nut as shown in **Figure 3**.



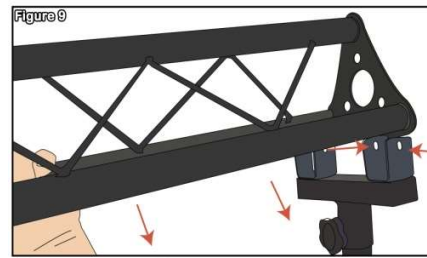
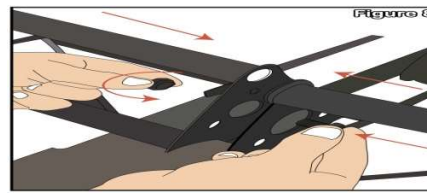
Step 3 – Turn the handle to crank up the system, tighten the knob and insert the locking pin through the hole to secure the height of the stand, see **Figure 4, 5 and 6**.



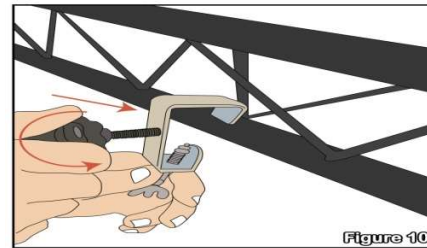
Step 4 – At the top of the stand, slide in the T-adaptor and tighten the knob to secure the adaptor on top (See **Figure 7**) and set aside.



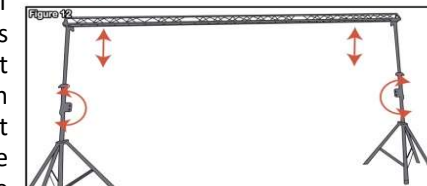
Step 5 – Take the trusses and connect each with the bolts provided as shown in **Figure 8**. Once the trusses are connected and securely fastened slide each end on the T-adapters of the stand (See **Figure 9**).



Step 6 – **Figure 10 and 11** shows how to mount the c-clamps provided and how to mount light fixtures.



Step 7 – To raise the truss, crank the handles. It is very important to raise the truss evenly on both sides. This is much easier done with two people. If you are doing this by yourself, do not raise more than one inch per side at a time. Place the safety pins in place and tighten the set knob located on the upper pulley assembly. The holes for the safety pin are located on the shaft directly above the knob.



Step 8 - For safety reasons, please always make sure to test the stability and safety of the product before use. Double check all nuts and bolts, knobs and connectors, make sure that these are tight and securely fastened before use of your product. Test the product under light use or light loads the first time to confirm assembly and structure of the product is correct.

As a general rule the higher the height of the system, the less stable the stand will be and less weight can be mounted. Additionally, spread the legs wider for a more secure and balanced stand especially if the stand will be carrying heavy items. The wider the legs are the more stable the stand will be. Also, make sure that the weight is evenly distributed throughout the stand system. Heavier equipment loads need to be installed near the tripod stand, while lighter ones can be mounted on the middle truss or further away from the tripod stand. If your system is a 3-truss section setup, then always keep the weight load of the middle truss limited to only 50% of the weight that is on connecting trusses. This would mean your middle truss will only half ½ of the weight on it as the connecting trusses. After you have mounted your equipment, always check the stability of the weight load.

Step 9 - To lower the stand, loosen the knob and push down on the post and turn the handle counter clockwise. Depending on how often you raise and lower the stand and/or open and close the tripods some maintenance is required. Periodically lightly grease the sprockets located on the on the crank assembly using petroleum jelly or other lightweight grease. Also, periodically check and tighten the nuts and bolts located on the tripod section. How often depends on how much you open and close the tripod. Failure to do this important maintenance step may result in the loss of a bolt which will cause a dangerous condition that may cause injury to yourself or others. If the post that lifts the truss squeaks you can use a lightweight spray lubricant such as WD40 .

ASSEMBLY AND DEMONSTRATION VIDEO

Please scan the QR Code below for the product demonstration video. Or go to the URL shown here and find the product video. www.Griffin-Stands.com/Videos



Scan me