

## PRODUCT SPECIFICATIONS

For current product specifications, please go to [www.griffin-stands.com](http://www.griffin-stands.com) and type the model number into the search bar. Locate the product listing to view the current factory specifications.

## TROUBLE SHOOTING

**Performance Issue, Uneven or Unstable-** Make sure all nuts and bolts are tight on the product. If they are, then loosen all nuts and bolts 1 full turn counter-clockwise, then go back and tighten each bolt only ½ turn tight. Then do a final tighten turn for another ½ turn tight. Next, Make sure there are not any missing nuts or bolts. Third, ensure all parts on the product are not broken or defective. Finally, Re-read the assembly instructions or watch the product demonstration video to ensure you have correctly assembled or are using the product properly with factory specifications.

**Missing Parts-** The pictures, videos and images shown in this manual might have changed style or count due to the product being redesigned. So in rare cases the part may no longer be included or of a different style. However, if you think you are missing a part that is necessary to the assembly and use of your product, then first carefully double check all packaging for any parts you think are missing. Some parts might be hiding in the packaging or loose in an inner box.

## COMPANY INFORMATION AND SUPPORT

### THANK YOU FOR YOUR PURCHASE

Thank you for purchasing the Griffin Cymbal Boom Stand. Your product comes with a 1 year factory warranty from purchase date. Please read all assembly instructions prior to assembling your new cart. Pictures that may aid in assembly can be found by going to [www.griffin-stands.com](http://www.griffin-stands.com) and typing B80 into the search bar.

Griffin™ stands and accessories are manufactured in several innovative factories responsible for developing products that address the newest needs and trends of the current market. We take pride in the Griffin™ brand and endeavor to be on the forefront of the musical stands and musical and lighting accessories market.



Griffin | 11408 Hwy 64 W, Tyler, TX 75704 |  
[info@griffin-stands.com](mailto:info@griffin-stands.com) | [www.Griffin-Stands.com](http://www.Griffin-Stands.com)



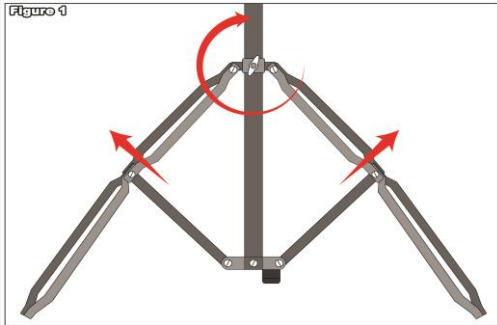
## User Manual Model# B80



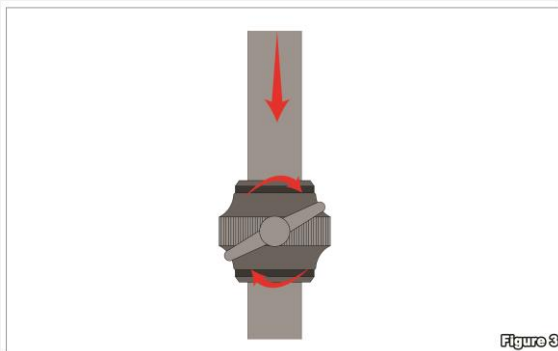
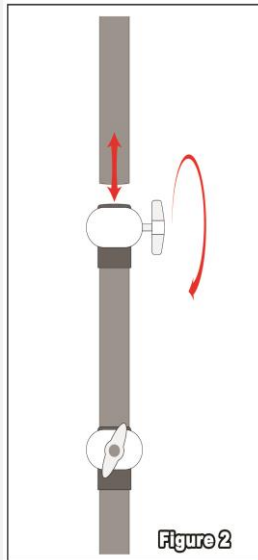
## Cymbal Boom Stand

## ASSEMBLY INSTRUCTIONS

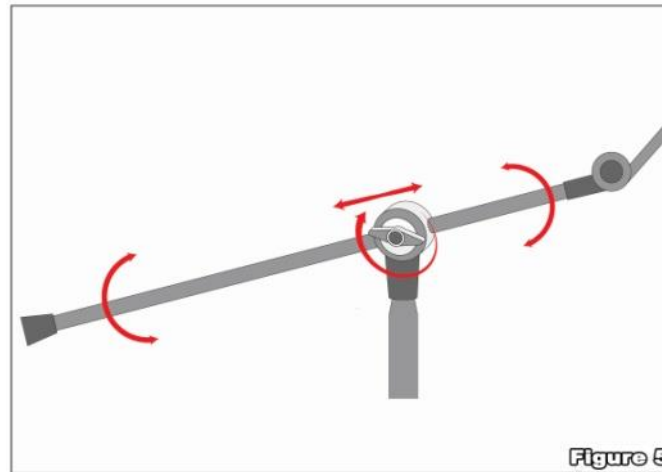
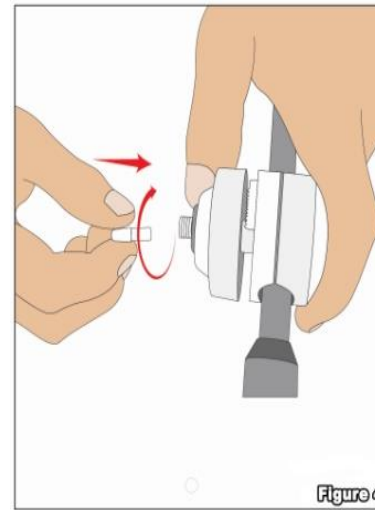
**Step 1** – Take the tripod section of the stand and spread the legs by using two (2) hands and tighten the knob to secure the legs (See **Figure 1**) Please note that under extension of the tripod legs may cause instability while over extension may cause stand failure.



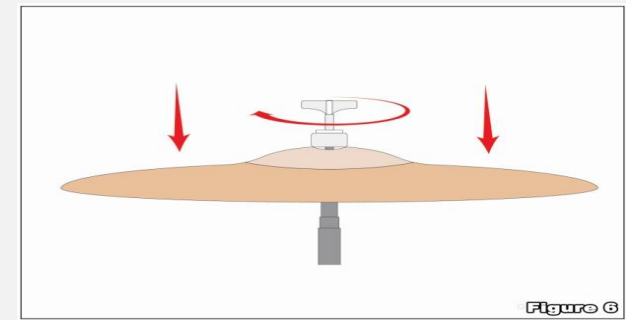
**Step 2** – Unscrew the knob on the top of the tripod stand and inset the chrome middle section all the way down (make sure that the middle pipe is straight down and use force if resistance is felt while inserting the pipe). Adjust the length of the chrome pipe you inserted and use the screw to secure the height of the stand as shown in **Figure 2** and **3**. With this you can use the included memory lock and adjust it to your preferred height.



**Step 3** – Take the boom arm align the teeth against the top of the middle section, also add pressure since the spring needs to be in the center and use the turning knob to tighten. Once this is in place the boom arm can be adjusted (See **Figure 4** and **5**)



**Step 4** – At the tip of the boom arm is a pivot point with another gear teeth which can be adjusted to your preferred angle by turning the knob loose and tightening once the desired angle is reached. Remove the top cymbal felt by unscrewing the knob and place your cymbal and place the top cymbal felt with the washer on top as seen on **Figure 6**. This type of cymbal stand comes with a counter weight that can be removed, however removing this may cause for the stand to tilt forward.



**Step 5** – To ensure stability make sure the front of the boom is placed over a leg of the tripod. This type of cymbal stand comes with a counter weight that can be removed, however removing this may cause for the stand to tilt forward. If your stand is wobbly or unstable, make sure that the legs are spread wide or adjust the boom arm the opposite way and bring down the height.

**Step 6** – For safety reasons, please always make sure to test the stability and safety of the product before use. Double check all nuts and bolts, knobs and connectors, make sure that these are tight and securely fastened before use of your product. Test the product under light use or light loads the first time to confirm assembly and structure of the product is correct.

## ASSEMBLY AND DEMONSTRATION VIDEO

Please scan the QR Code below for the product demonstration video. Or go to the URL shown here and find the product video. [www.Griffin-Stands.com/Videos](http://www.Griffin-Stands.com/Videos)



Scan me