

## PRODUCT SPECIFICATIONS

For current product specifications, please go to [www.griffin-stands.com](http://www.griffin-stands.com) and type the model number into the search bar. Locate the product listing to view the current factory specifications.

## TROUBLE SHOOTING

**Performance Issue, Uneven or Unstable-** Make sure all nuts and bolts are tight on the product. If they are, then loosen all nuts and bolts 1 full turn counter-clockwise, then go back and tighten each bolt only ½ turn tight. Then do a final tighten turn for another ½ turn tight. Next, Make sure there are not any missing nuts or bolts. Third, ensure all parts on the product are not broken or defective. Finally, Re-read the assembly instructions or watch the product demonstration video to ensure you have correctly assembled or are using the product properly with factory specifications.

**Missing Parts-** The pictures, videos and images shown in this manual might have changed style or count due to the product being redesigned. So in rare cases the part may no longer be included or of a different style. However, if you think you are missing a part that is necessary to the assembly and use of your product, then first carefully double check all packaging for any parts you think are missing. Some parts might be hiding in the packaging or loose in an inner box.

## COMPANY INFORMATION AND SUPPORT

### THANK YOU FOR YOUR PURCHASE

Thank you for purchasing the Griffin Microphone Isolator Panel. Your product comes with a 1 year factory warranty from purchase date. Please read all assembly instructions prior to assembling your new cart. Pictures that may aid in assembly can be found by going to [www.griffin-stands.com](http://www.griffin-stands.com) and typing APSI04 into the search bar.

Griffin™ stands and accessories are manufactured in several innovative factories responsible for developing products that address the newest needs and trends of the current market. We take pride in the Griffin™ brand and endeavor to be on the forefront of the musical stands and musical and lighting accessories market.



Griffin | 11408 Hwy 64 W, Tyler, TX 75704 |  
[info@griffin-stands.com](mailto:info@griffin-stands.com) | [www.Griffin-Stands.com](http://www.Griffin-Stands.com)



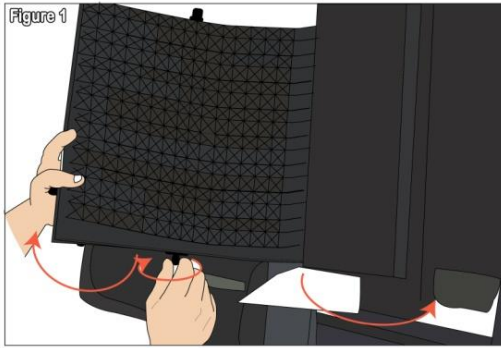
## User Manual Model# APSI04



## Microphone Isolator Panel

# ASSEMBLY INSTRUCTIONS

**Step 1** – Take the panel and open it up by unscrewing the little knob at the top near the angles of the panel as shown in **Figure 1**.



**Step 2** – As shown in **Figure 2**, take the steel track sheet (Part E) and screw to the middle bottom part of the panel by using the 3/8" to 5/8" adapter (Part B) and Steel knob with 3/8" thread male (Part D). On the end of the steel track sheet (Part D) insert the tube with 3/8" thread male (Part C) and secure using the 3/8" to 5/8" adapter (Part B) as shown in **Figure 3**. At the tip of the tube insert the 3/8" to 5/8" adapter (Part B) then the 5/8" washer (Part A).

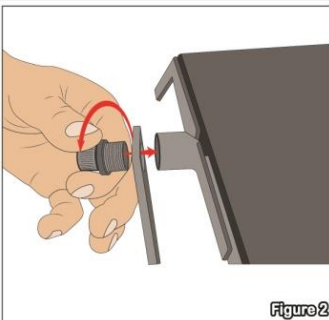


Figure 2

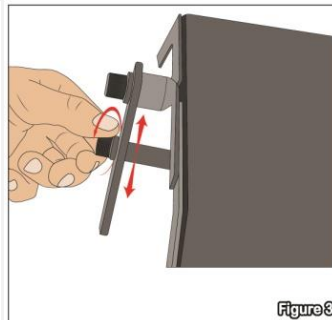


Figure 3

**Step 3** – Take the clamp (Part G) and screw it in at the back using M5 Screw (Part F). By this the panel can be mounted to a tripod vertical stand as this panel is heavy. A speaker stand will also work. Then screw in the back knobs to clamp the shield to the vertical stand. (See **Figure 4 and 5**)

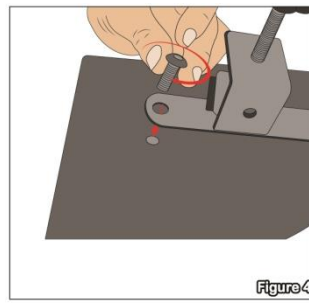


Figure 4

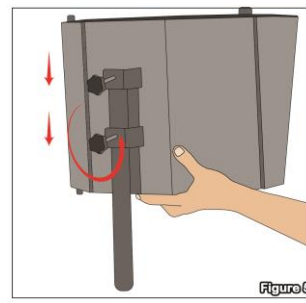


Figure 5

**Step 4** – **Figure 6** shows the shock mount being screwed in the microphone clip. And **Figure 7** is mounting the microphone by sliding it through the shock mount.

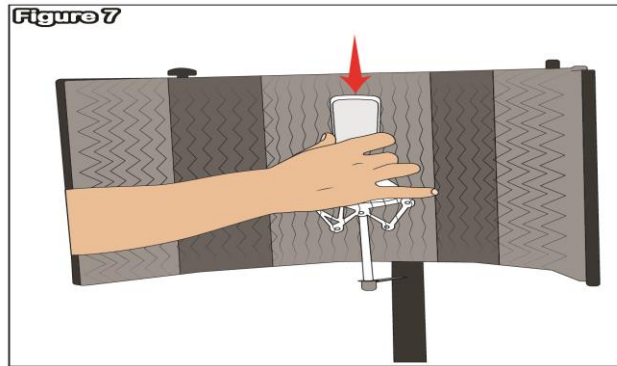
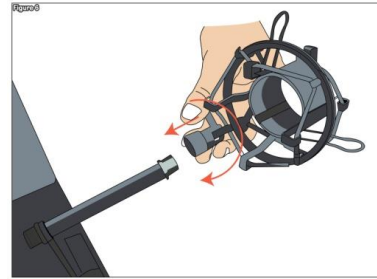


Figure 7

**Step 5** - For safety reasons, please always make sure to test the stability and safety of the product before use. Double check all nuts and bolts, knobs and connectors, make sure that these are tight and securely fastened before use of your product. Test the product under light use or light loads the first time to confirm assembly and structure of the product is correct.

\*\*\*Please note that this is NOT a table top mount, this is designed to be mounted on a heavy-duty stand (speaker stand preferably) to support the entire panel.

PART LETTER	PART NAME	QTY
B	3/8" to 5/8" adapter already attached to PART C	2
C	Tube with 3/8" thread male	1
D	Steel knob with 3/8" thread male	1
E	Steel track sheet	1
F	M5 screw already attached to back panel	2
G	Clamp	1

<p>DIAGRAM 1</p>	<p>DIAGRAM 2</p>
<p>DIAGRAM 3</p>	<p>DIAGRAM 4</p>

## ASSEMBLY AND DEMONSTRATION VIDEO

Please scan the QR Code below for the product demonstration video. Or go to the URL shown here and find the product video. [www.Griffin-Stands.com/Videos](http://www.Griffin-Stands.com/Videos)

