

## PRODUCT SPECIFICATIONS

For current product specifications, please go to [www.griffin-stands.com](http://www.griffin-stands.com) and type the model number into the search bar. Locate the product listing to view the current factory specifications.

## TROUBLE SHOOTING

**Performance Issue, Uneven or Unstable-** Make sure all nuts and bolts are tight on the product. If they are, then loosen all nuts and bolts 1 full turn counter-clockwise, then go back and tighten each bolt only ½ turn tight. Then do a final tighten turn for another ½ turn tight. Next, Make sure there are not any missing nuts or bolts. Third, ensure all parts on the product are not broken or defective. Finally, Re-read the assembly instructions or watch the product demonstration video to ensure you have correctly assembled or are using the product properly with factory specifications.

**Missing Parts-** The pictures, videos and images shown in this manual might have changed style or count due to the product being redesigned. So in rare cases the part may no longer be included or of a different style. However, if you think you are missing a part that is necessary to the assembly and use of your product, then first carefully double check all packaging for any parts you think are missing. Some parts might be hiding in the packaging or loose in an inner box.

## COMPANY INFORMATION AND SUPPORT

### THANK YOU FOR YOUR PURCHASE

Thank you for purchasing the Griffin Truss Crank Stands. Your product comes with a 1 year factory warranty from purchase date. Please read all assembly instructions prior to assembling your new cart. Pictures that may aid in assembly can be found by going to [www.griffin-stands.com](http://www.griffin-stands.com) and typing APL1300 into the search bar.

Griffin™ stands and accessories are manufactured in several innovative factories responsible for developing products that address the newest needs and trends of the current market. We take pride in the Griffin™ brand and endeavor to be on the forefront of the musical stands and musical and lighting accessories market.



Griffin | 11408 Hwy 64 W, Tyler, TX 75704 |  
[info@griffin-stands.com](mailto:info@griffin-stands.com) | [www.Griffin-Stands.com](http://www.Griffin-Stands.com)



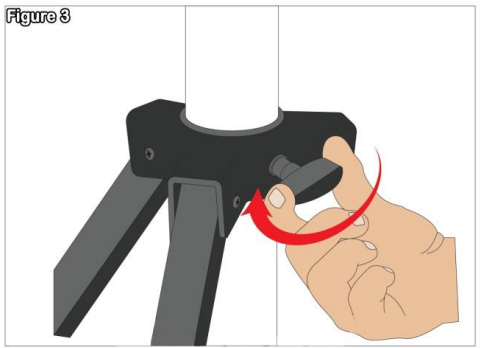
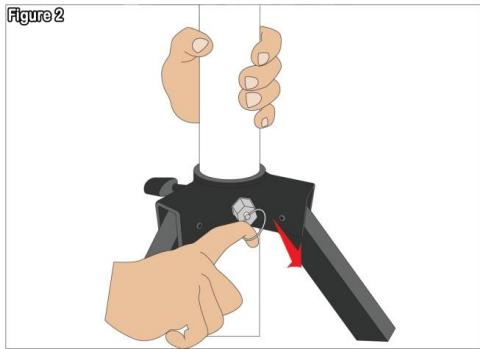
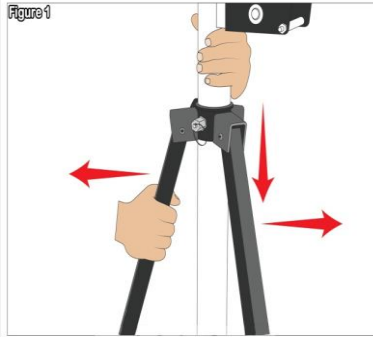
## User Manual Model# APL1300



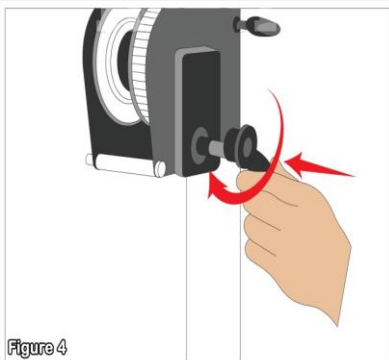
## Truss Crank Stands

## ASSEMBLY INSTRUCTIONS

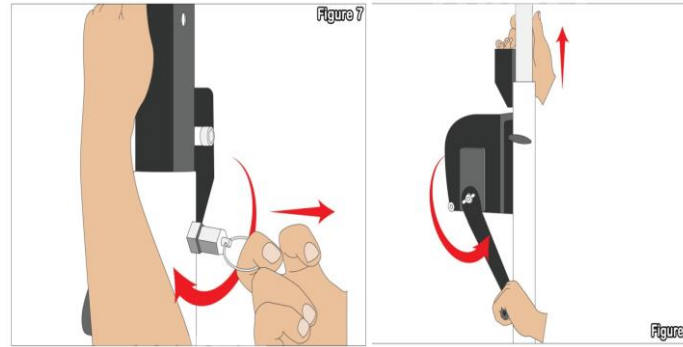
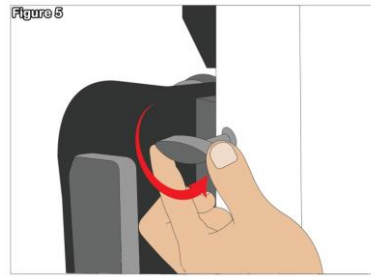
**Step 1** – Take the stand and pull the legs out and downwards, tighten the knob and pull and twist the locking pin to secure the legs in place as shown in **Figure 1**, **2** and **3**.



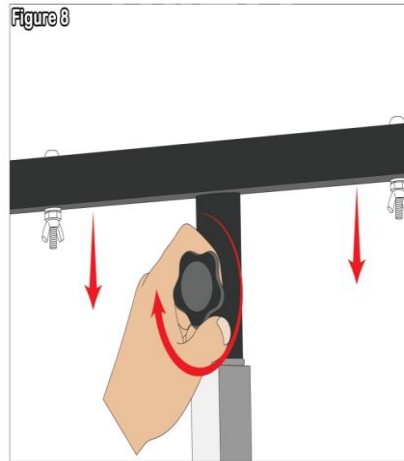
**Step 2** – Take the handle and place it on the side of the cranks, there should be a protruding screw to screw in the handle, use the wing nut to secure the handle in place (See **Figure 4**).



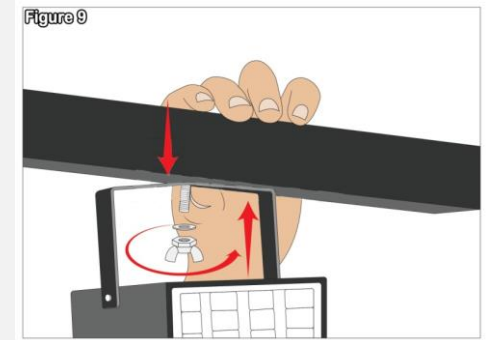
**Step 3** – Slide in the T-Bar at the top of the stand and tighten the knob (See **Figure 5**). Loosen the knob near the crank handle and unlock the pin on the opposite side of the knob, use the handle to crank up the stand. Tighten the knob you loosen previously and also twist the pin to lock the height of the stand in place (See **Figure 6** and **7**).



**Step 4** – To bring down the stand, loosen the knob and unlock the pin and crank down the handle as shown in **Figure 8**. Apply downward force along the height adjustment bar if there is difficulty in cranking down the stand.



**Step 5** – Use the provided washer and wing nuts to load your light fixtures and other equipment onto the stand (**Figure 9**).



**Step 6** – For safety reasons, please always make sure to test the stability and safety of the product before use. Double check all nuts and bolts, knobs and connectors, make sure that these are tight and securely fastened before mounting items. As a general rule the higher the height of the system, the less stable the stand will be and less weight can be mounted. Additionally, spread the legs wider for a more secure and balanced stand especially if the stand will be carrying heavy items. The wider the legs are the more stable the stand will be. Also, make sure that the weight is evenly distributed throughout the stand system. Heavier equipment loads need to be installed near the tripod stand, while lighter ones can be mounted on the middle truss or further away from the tripod stand.

## ASSEMBLY AND DEMONSTRATION VIDEO

Please scan the QR Code below for the product demonstration video. Or go to the URL shown here and find the product video. [www.Griffin-Stands.com/Videos](http://www.Griffin-Stands.com/Videos)



Scan me