

PRODUCT SPECIFICATIONS

For current product specifications, please go to www.griffin-stands.com and type the model number into the search bar. Locate the product listing to view the current factory specifications.

TROUBLE SHOOTING

Performance Issue, Uneven or Unstable- Make sure all nuts and bolts are tight on the product. If they are, then loosen all nuts and bolts 1 full turn counter-clockwise, then go back and tighten each bolt only ½ turn tight. Then do a final tighten turn for another ½ turn tight. Next, Make sure there are not any missing nuts or bolts. Third, ensure all parts on the product are not broken or defective. Finally, Re-read the assembly instructions or watch the product demonstration video to ensure you have correctly assembled or are using the product properly with factory specifications.

Missing Parts- The pictures, videos and images shown in this manual might have changed style or count due to the product being redesigned. So in rare cases the part may no longer be included or of a different style. However, if you think you are missing a part that is necessary to the assembly and use of your product, then first carefully double check all packaging for any parts you think are missing. Some parts might be hiding in the packaging or loose in an inner box.

COMPANY INFORMATION AND SUPPORT

THANK YOU FOR YOUR PURCHASE

Thank you for purchasing the Griffin Double Studio Mixer Stand. Your product comes with a 1 year factory warranty from purchase date. Please read all assembly instructions prior to assembling your new cart. Pictures that may aid in assembly can be found by going to www.griffin-stands.com and typing AP3299 into the search bar.

Griffin™ stands and accessories are manufactured in several innovative factories responsible for developing products that address the newest needs and trends of the current market. We take pride in the Griffin™ brand and endeavor to be on the forefront of the musical stands and musical and lighting accessories market.



Griffin | 11408 Hwy 64 W, Tyler, TX 75704 |
info@griffin-stands.com | www.Griffin-Stands.com



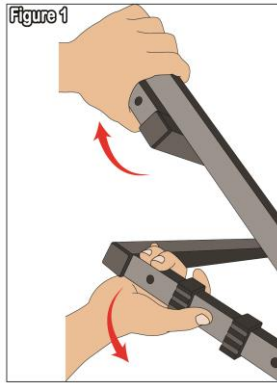
User Manual Model# AP3299



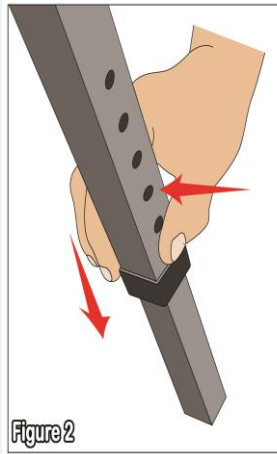
Double Studio Mixer Stand

ASSEMBLY INSTRUCTIONS

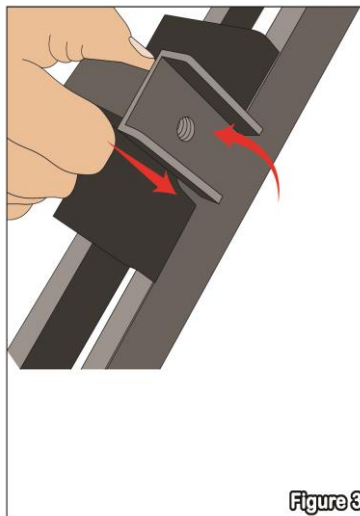
Step 1 – Locate the leg assembly (Part A) and as seen on **Figure 1** expand and unfold the legs of the stand. The front legs can be spread apart as far as needed. The distance between the back legs is determined by the back crossbar.



Step 2 – To adjust the height of the stand, each bottom of the legs has a silver push pin that is pushed to allow the slots of the legs to adjust. Pushing or pulling the bottom part will be the height adjustment, if the pin is on the 3rd hole of one leg make sure that all the other pins are on the 3rd hole as well on the other legs. Refer to **Figure 2**.



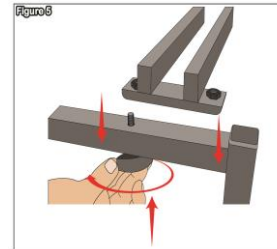
Step 3 – Place the crossbar (Part B) across the leg assembly and line up the nuts welded to the crossbar with the two holes closest to the front of the stand on each side (See **Figure 3**)



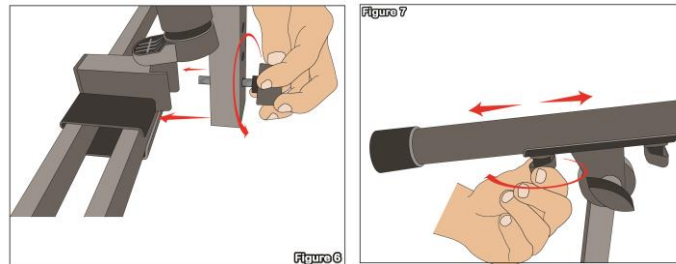
Step 4 – Locate 2 pairs of plates (Part D), take 1 and place the plate with a screw knob (Part E) on the bottom of the crossbar and the other one on the top parallel to the plate at the bottom. Screw the knob at the bottom to secure the plates together as shown on **Figure 4**.



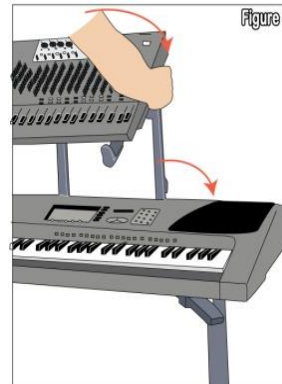
Step 5 – Take the arm (Part F and H) and line the bottom with the mount on the plates you installed on Step 4. See **Figure 5**. Tighten the knob to secure the arm in place.



Step 6 – **Figure 6** shows the knob (Part G) on the side of the arm to adjust the angle and **Figure 7** shows a knob just below the arm to slide it front and back.



Step 7 – For safety reasons, please always make sure to test the stability and safety of the product before use. Double check all nuts and bolts, knobs and connectors, make sure that these are tight and securely fastened before use of your product. Test the product under light use or light loads the first time to confirm assembly and structure of the product is correct.



ASSEMBLY AND DEMONSTRATION VIDEO

Please scan the QR Code below for the product demonstration video. Or go to the URL shown here and find the product video. www.Griffin-Stands.com/Videos



Scan me